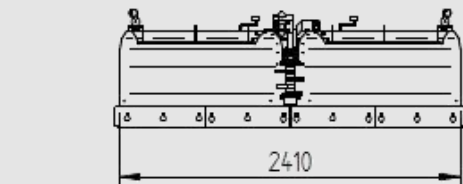
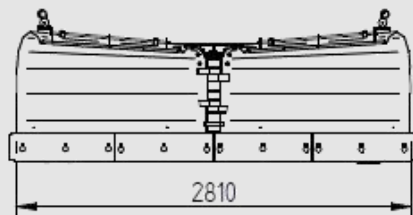
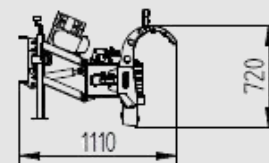


Mudel	Traktoritele ja laaduritele							Väiketraktoritele		Pikapitele	
	VP-2,8	VP-4.0	VP-3.7 city	VP-3.7	VP-3,2city	VP-3.2	VP-2,8	DP-2,4	VP-2,4	DP-2,3	VP-2,3
Maks. töölaius (mm)	2805	4000	3700	3700	3200	3200	2805	2420	2410	2300	2310
Min. töölaius (mm)	2325	3295	3050	3050	2650	2650	2325	2000	1995	2010	2015
Mass standard varustuses (kg)	622	1280	1195	1240	1045	1090	622	190-270	278	149*	149*
Hõlma kõrgus koos teradega (mm)	940	1290	1030	1260	1030	1170	940	720	720	570	570
Töönurk (maapinnaga) (°)	90	90	90	90	90	90	90	90	90	90/-20	90/-20
Seksioonide arv ja laius (tk x mm)	4 x 692	4x991	4x915	4x915	4x792	4x792	4x692	4x586	4x586	4x570	4x570
Maks. pöördnurk (°)	35	35	35	35	35	35	35	35	35	30	30
Silindreid (tk)	2	2	2	2	2	2	2	2	2	2+1	2+1
Vedrumehhanisme (seksioone)	4	4	4	4	4	4	4	4	4	4	4
Vaheraam	S	S	S	S	S	S	S	S	S	S	S
1/2" kiire hüdraulikaühendus	S	S	S	S	S	S	S	S	S	S	S
Turvamarkeering	S	S	S	S	S	S	S	S	S	S	S
Parallelogramm (+/-5 kraadi risti teega)	L	S	S	S	S	S	S	S	S	S	S
Kummiterad	L	L	L	L	L	L	L	S	L	L (plastik)	L (plastik)
Hardox terad	S	S	S	S	S	S	S	L	S	S	S
Reguleeritavad tallad	S	S	S	S	S	S	S	S	S	S	S
Tugirattad	L	L	L	L	L	L	L	L	L	L	L
Hydraulic safety valve of the pivot cylinder with hydraulic accumulator	S	S	S	S	S	S	S	S	S	S	S
Electrical hydraulic distributor with safety valves	E	S	S	S	S	S	S	L	L	S	S
Hüdraulika lülitamine kabiinist	S	S	S	S	S	S	S	S	S	puldiga	puldiga
Lumepiiraja	L	L	L	L	L	L	L	L	L	S	S
Overload valve set with hydraulic accumulator	L	L	L	L	L	L	L	-	S	-	-
LED gabariituled	S	S	S	S	S	S	S	S	S	S	S
Garantii (y)	1	1	1	1	1	1	1	1	1	1	1

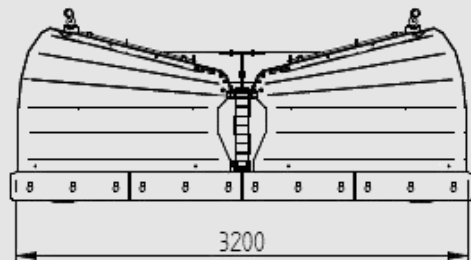
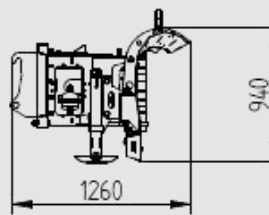
S-standard L-lisavarustus *-Ilma raamita



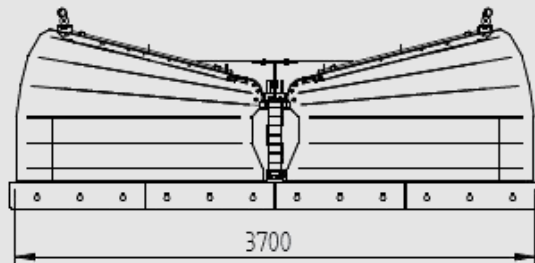
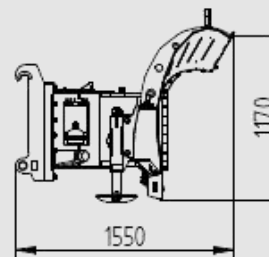
250 kg



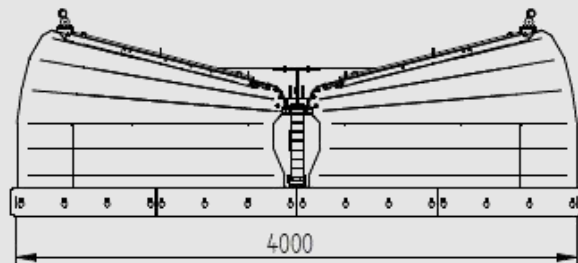
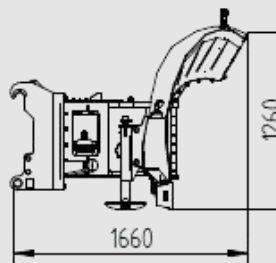
650 kg



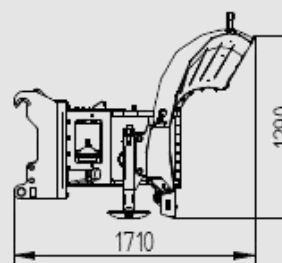
1090 kg



1240 kg



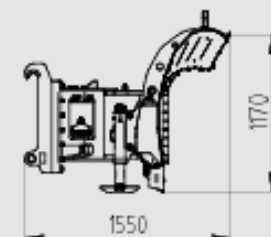
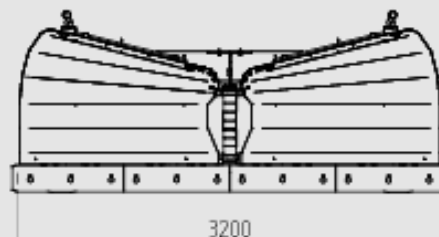
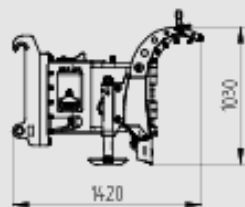
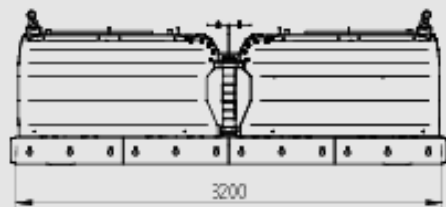
1280 kg



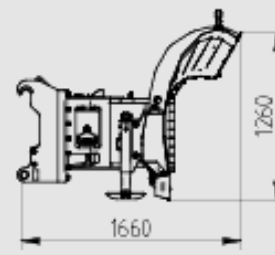
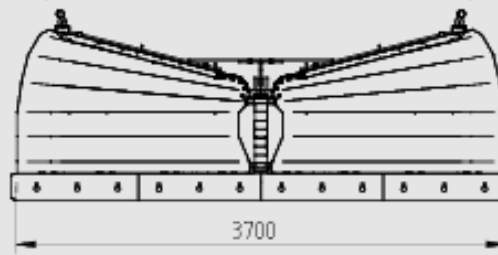
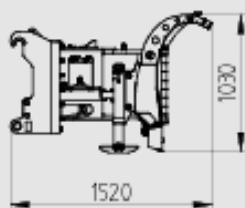
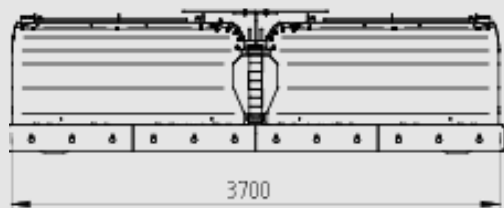
estre

V-sahkad traktoritele ja laaduritele

"Cityplow"
1045 kg



V-plow
3,2 m
1090 kg



V-plow
3,7 m
1240 kg

"Cityplow"
1195 kg